

A30-E AND BACKFLOW PREVENTOR INSTALLATION GUIDELINES

At this time the “District” is providing State Approved backflow devices the same size as the meter for their metered customers that are required to have one installed. The device is to be installed at or near the meter on the customer’s service line before any tees or taps. The “District” will provide the equipment and labor for the installation if the device immediately follows the meter. If the device does not immediately follow the meter the customer may be required to supply both equipment and labor for installation; the “District” will still supply the backflow device. The plumbing code requires that all backflow devices be adequately protected against freezing weather, i.e. heat tape, etc; this is the customer’s responsibility. In the event the device is damaged by freezing or other careless acts, it is required that the owner of the property it serves reimburse the “District” for any part, labor and or new devices that may be required. At this time the “District” is supplying regular tests and repair parts if needed for metered customers, every six months, with the exception of freezing or other careless acts.

DISTRICT’S INSTALLATION

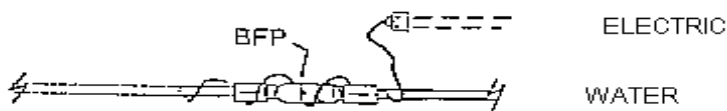
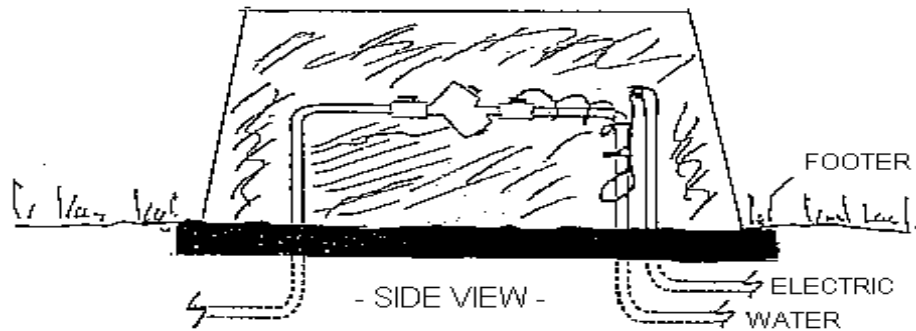
1. Install Backflow device at meter
2. Place A30-E over Backflow device and anchor onto a concrete pad.

CUSTOMER SITE PREPARATION

1. Provide 120V ground fault protected circuit to Backflow device.

Mount outlet 6” above discharge point of RPZ units. All wiring protruding through the ground or that is lying on the ground should be installed in conduit to prevent shorting or fire due to mice nesting or chewing on the wires.

2. Install heat tape onto Backflow device.



- PLAN VIEW -

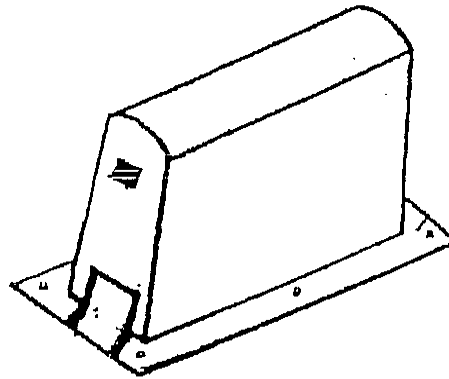
ECONOMY SERIES ENCLOSURES

(Standard-Emcapsulated)

Dimensions

<u>Model</u>	<u>Length</u>	<u>Width</u>	<u>Height</u>	<u>Flange Size</u>	<u>Weight</u>
A30 - E	27"	10"	18"	34" X 18"	21 lbs.
A41 - E	38"	13"	27"	45" X 20"	26 lbs.
A51 - E	47"	13"	30"	55" X 20"	42 lbs

(Inside Demensions)



- * Fiberglass enclosures have 1" encapsulated insulation with 1/8" fiberglass inner and outer walls.
- * Built in drain valve.
- * Forest green in color.
- * One-piece construction.
- * Standard series designed to cover devices for sizes 3/4" - 2"